

# ROSIN SMYTH



## 8/200 Sydney Road Brunswick VIC

Introducing an exceptional office suite located on the prominent Sydney Road, a mere 5km north of the CBD. This first-floor suite, positioned at the rear for privacy and ease of access, is designed to support and enhance business operations. With a layout that balances privacy, collaboration, and professional interactions, it's a prime opportunity for investors and owner-occupiers alike. The office is ideal for a diverse range of industries, from community services to medical professionals and standard commercial enterprises.

### Key Details:

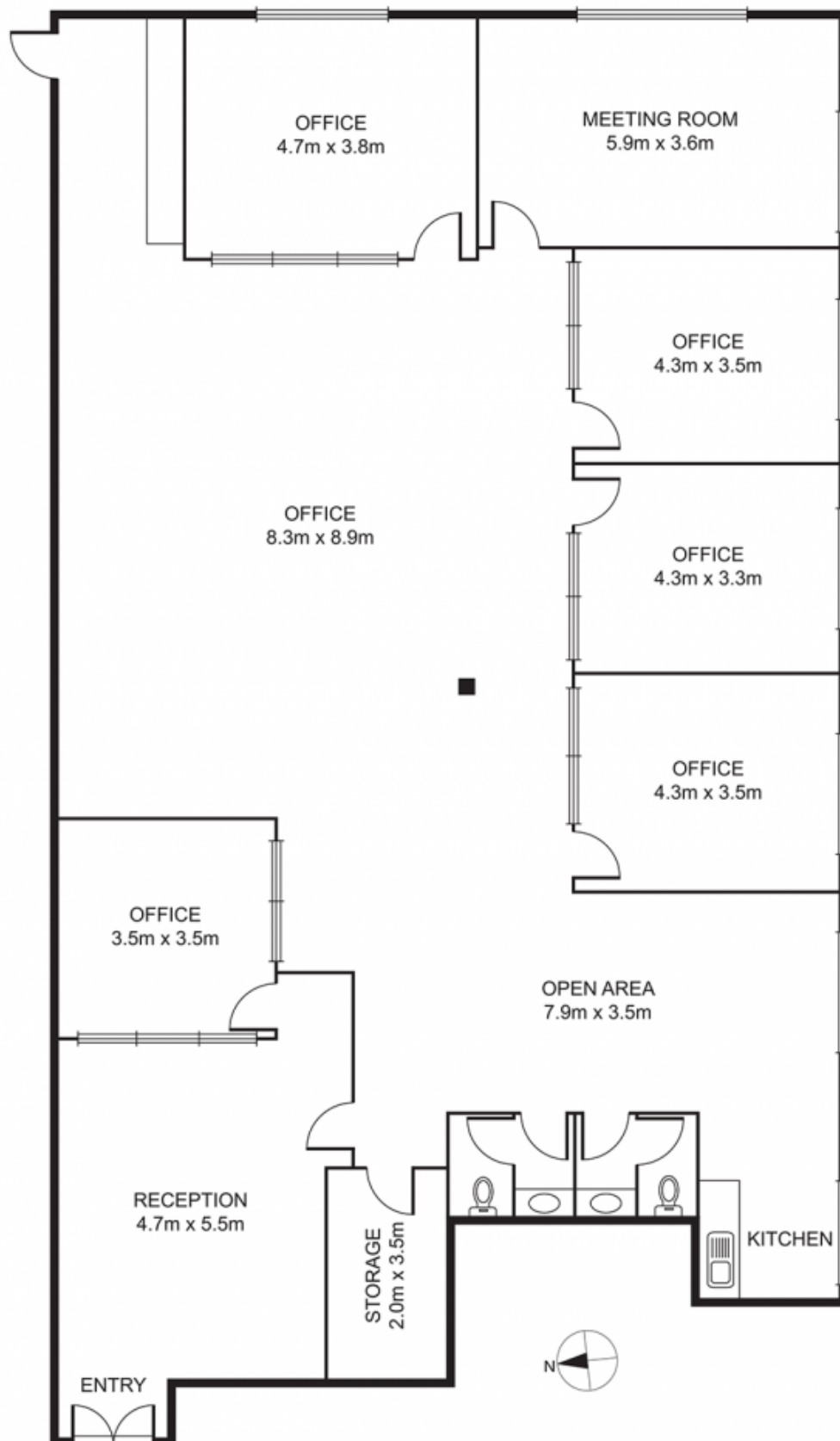
- Location: Prominent Sydney Road, just 5km north of the CBD.
- Accessibility: Situated on the first floor with rear positioning; includes lift service for easy access.
- Natural Light and Views: Features excellent natural light

**Price** : Contact Agent  
**Building Size** : 258 sqm  
**View** : <https://www.rosinsmyth.com.au/7425731>



**Martin Smyth**  
**9695 5999**

# 8/200 SYDNEY ROAD, BRUNSWICK



Disclaimer: Please note plans are indicative only and not drawn to exact scale. All dimensions are approximate. Potential buyers should satisfy themselves of any pertinent matters.