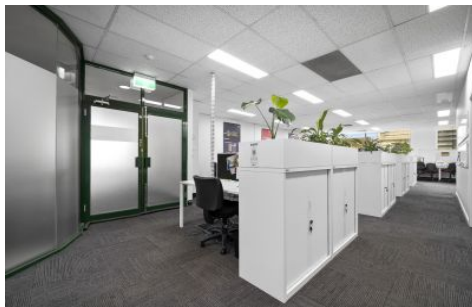


ROSIN SMYTH



Level 1/6/200 Sydney Road Brunswick VIC

Located 5 kms North Of Melbourne's Central Activities District

Building Size : 258 sqm
View : <https://www.rosinsmyth.com.au/6991265>

Suite 6 - First Floor Facing Sydney Road
Area 258 m2 approx
Lift Access
Partitioned and Open plan Areas
Air-Conditioned
Male & Female amenities and Shower
Kitchenette
Public car park at Rear



Martin Smyth
9695 5999

6/200 SYDNEY ROAD, BRUNSWICK

