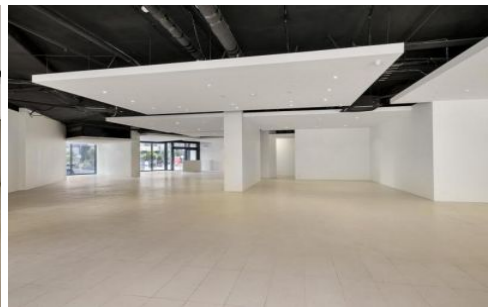
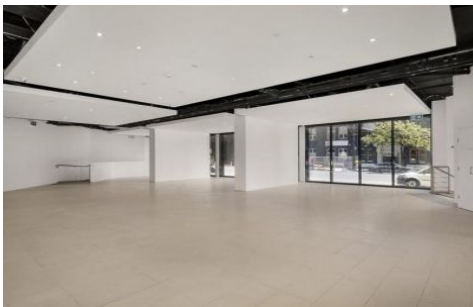


ROSIN SMYTH



269-283 City Road Southbank VIC

Positioned beneath the Bank Apartment development, situated in the heart of Southbank, this versatile property boasts a prime location in a vibrant and highly visible area.

With excellent exposure, the vast amount of surrounding residential properties provides the opportunity to capitalise in an area undersupplied with retail amenity, making an ideal choice for businesses seeking to brand a bold statement.

Flooded with natural light and an abundance of space, this property is bright and welcoming, creating an inviting atmosphere for customers or clients.

Metres from cafes, restaurants, supermarkets and the CBD, this property provides a haven for a new or existing business to thrive.

Building Size : 405 sqm

View : <https://www.rosinsmyth.com.au/6967022>



Martin Smyth
9695 5999