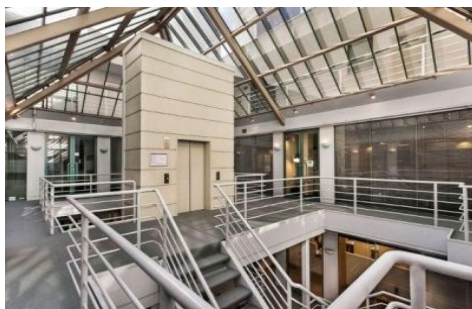


ROSIN SMYTH



13/51-55 City Road Southbank VIC

- * Entry foyer with reception & lounge area
- * 3 executive offices overlooking City Road & Southgate hotel/restaurant & shopping precinct
- * Large open plan area positioned in centre of tenancy
- * Spacious meeting room
- * Separate IT/storeroom
- * New kitchen area
- * 2 x WC
- * 2 car parks
- * Includes desks, chairs & workstations
- * Area 204m2 approx

AVAILABLE NOW!

Contact Martin Smyth - 0411 744 000

Building Size : 204 sqm

View : <https://www.rosinsmyth.com.au/6197938>



Martin Smyth
9695 5999