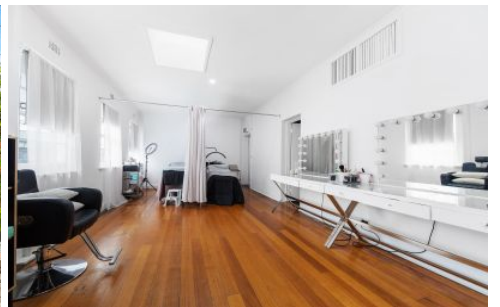


ROSIN SMYTH



318 Glenferrie Road Malvern VIC

Welcome to 318 Glenferrie Road, Malvern - a standout commercial property with a commanding presence on a prominent corner. The property's versatility accommodates a range of uses, making it an ideal canvas for your business vision.

Key Features:

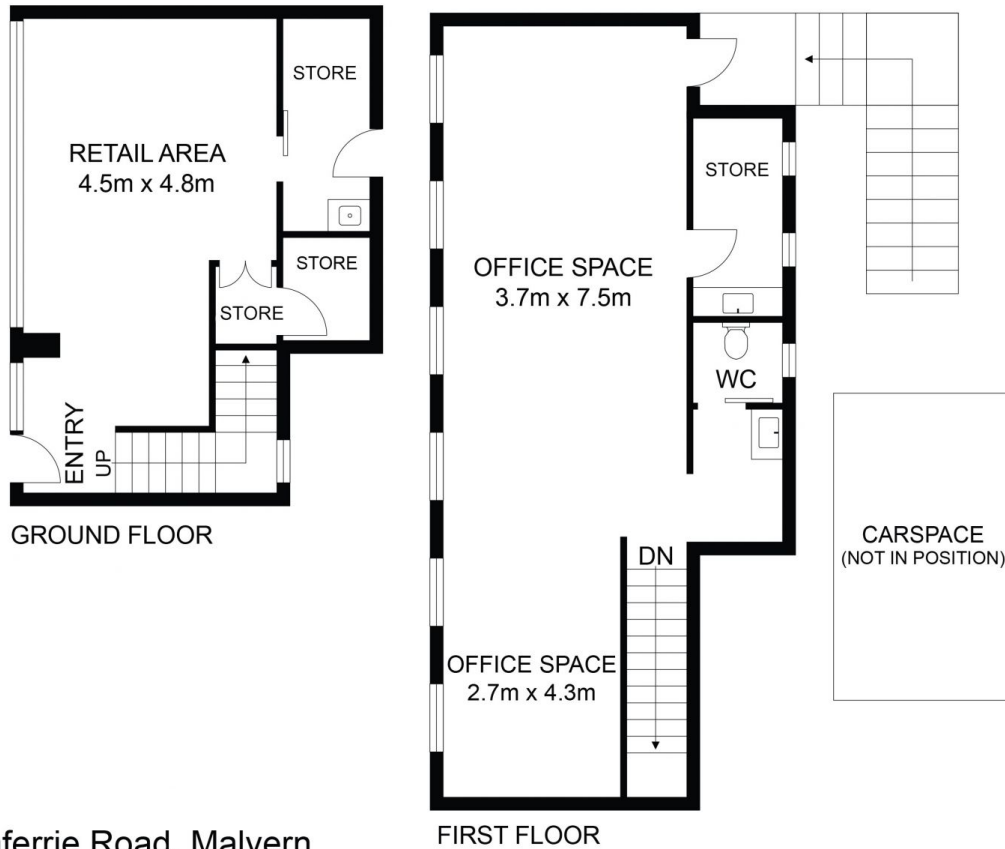
- Large frontage on a prominent corner
- Impressive first-floor open-plan space with six windows overlooking Glenferrie Road
- Ground floor area ideal for a reception
- Bathroom and essential amenities
- Versatile layout suitable for various uses
- Secure rear parking, a rare asset in commercial spaces
- Build Area: 88m2 (approx)

Position your business at the intersection of style and

Price : Contact Agent
Building Size : 88 sqm
View : <https://www.rosinsmyth.com.au/6197924>



Martin Smyth
9695 5999



318 Glenferrie Road, Malvern

FIRST FLOOR

DISCLAIMER : ALL DIMENSIONS ARE AN APPROXIMATION ONLY AND NO GUARANTEE IS GIVEN WITH RESPECT TO ACCURACY.