

ROSIN SMYTH



8/200 Sydney Road Brunswick VIC

Suite comprises of:

- * First floor rear position
- * Lift Service
- * Excellent natural light & City Views
- * 5 Large Separate Offices
- * Open plan area, suit workstations
- * Reception area with interview room
- * Male & Female Amenities
- * Kitchenette
- * Large Public Carpark at the rear

Contact Martin Smyth 0411 744 00 for more information

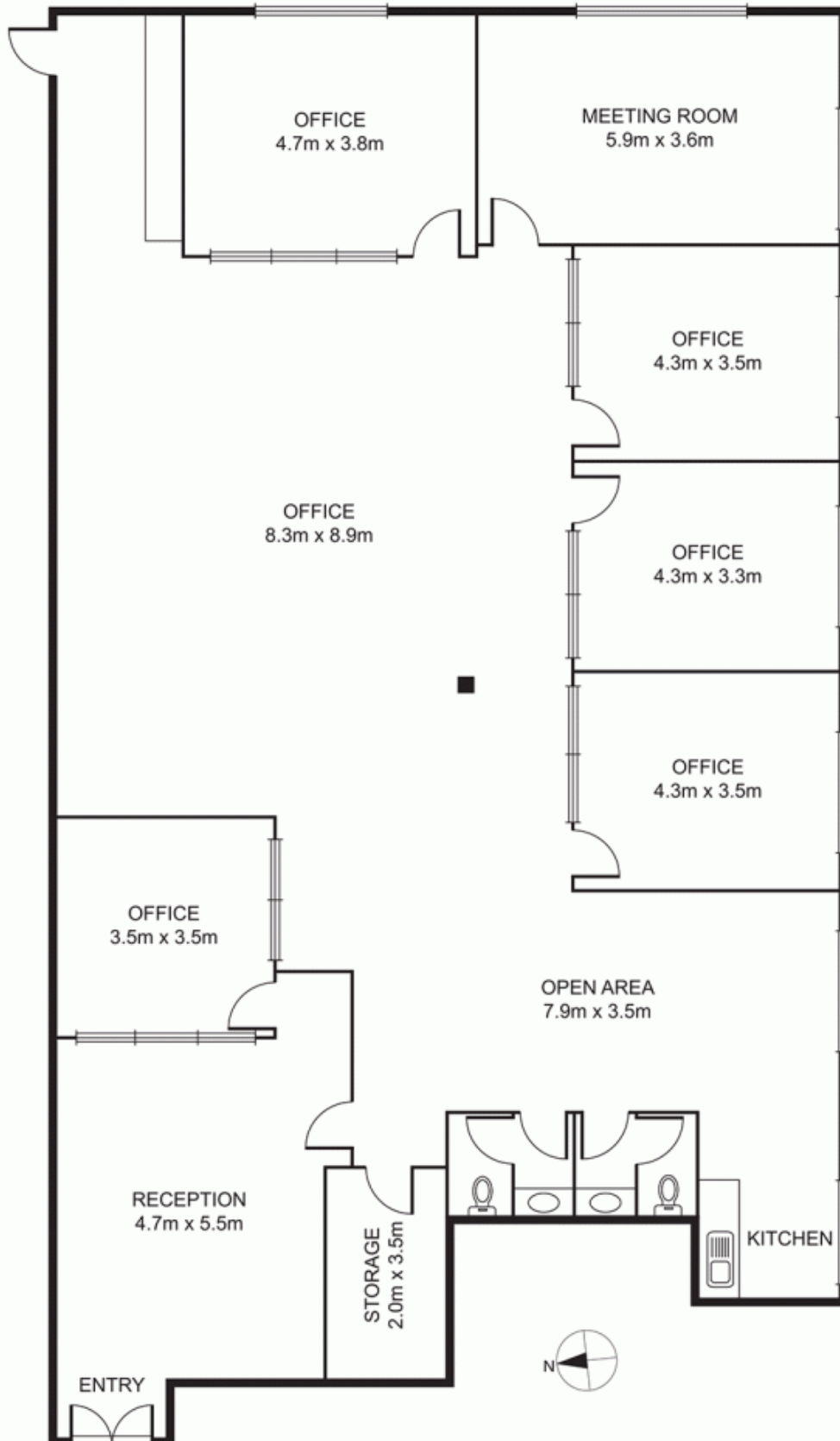
Building Size : 280 sqm

View : <https://www.rosinsmyth.com.au/6197916>



Martin Smyth
9695 5999

8/200 SYDNEY ROAD, BRUNSWICK



Disclaimer: Please note plans are indicative only and not drawn to exact scale. All dimensions are approximate. Potential buyers should satisfy themselves of any pertinent matters.