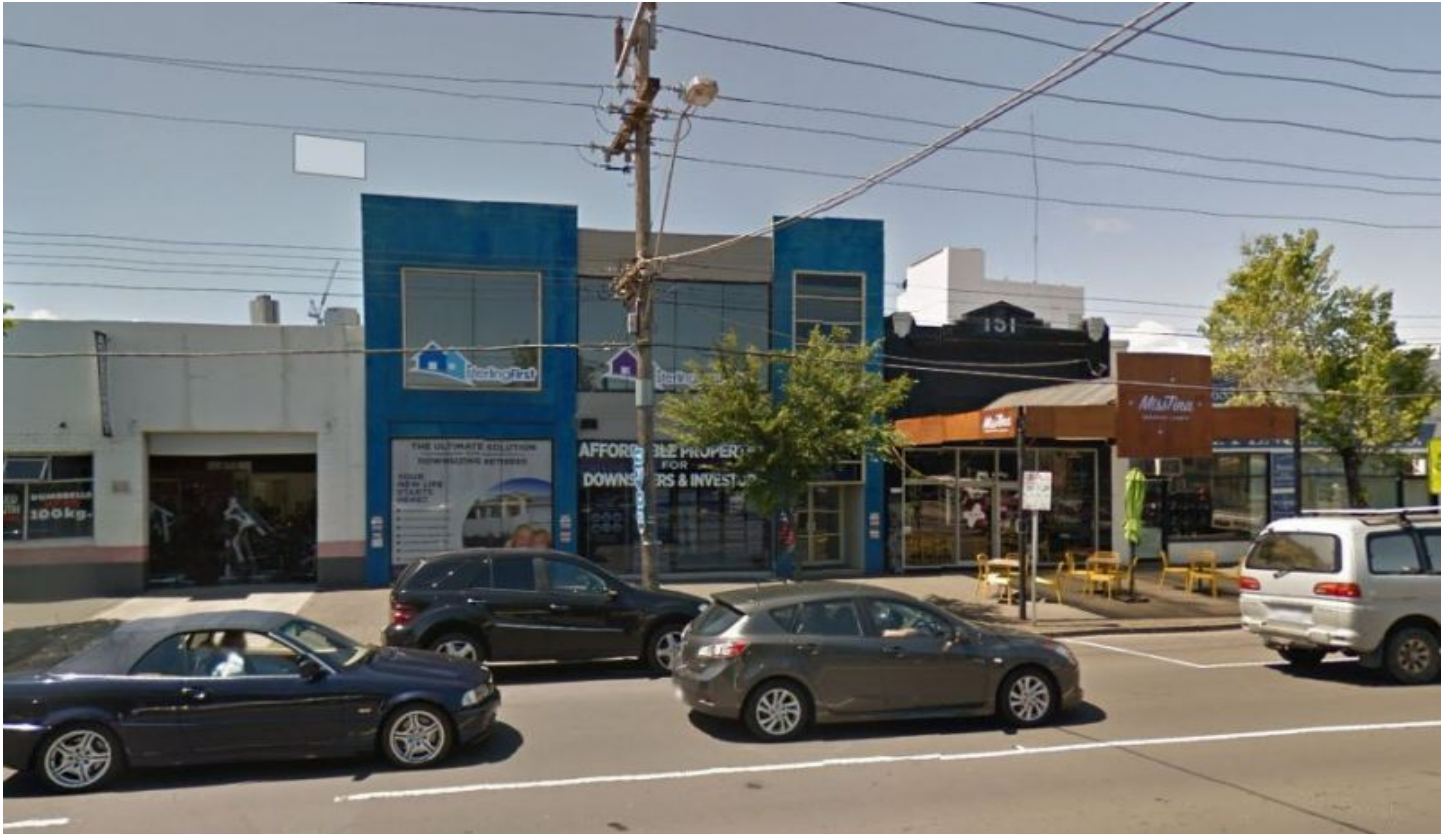


# ROSIN SMYTH



## 147 Montague Street South Melbourne VIC

\* Private carpark offering up to 6 off-street car spots with ample street parking.

\* Boasts two boardroom style meeting rooms with TV's

\* A large 30 seat conference room with overhead projector, perfect for housing training, seminars, workshops, and events

\* Flexible floor plan layout with a mix of several private lockable offices & open plan areas.

\* Close to the vivacious South Melbourne markets and numerous restaurants and cafes in Port Melbourne.

\* 350 m2

\* zoned CAPITAL CITY Zone - Schedule 1

**Building Size** : 350 sqm

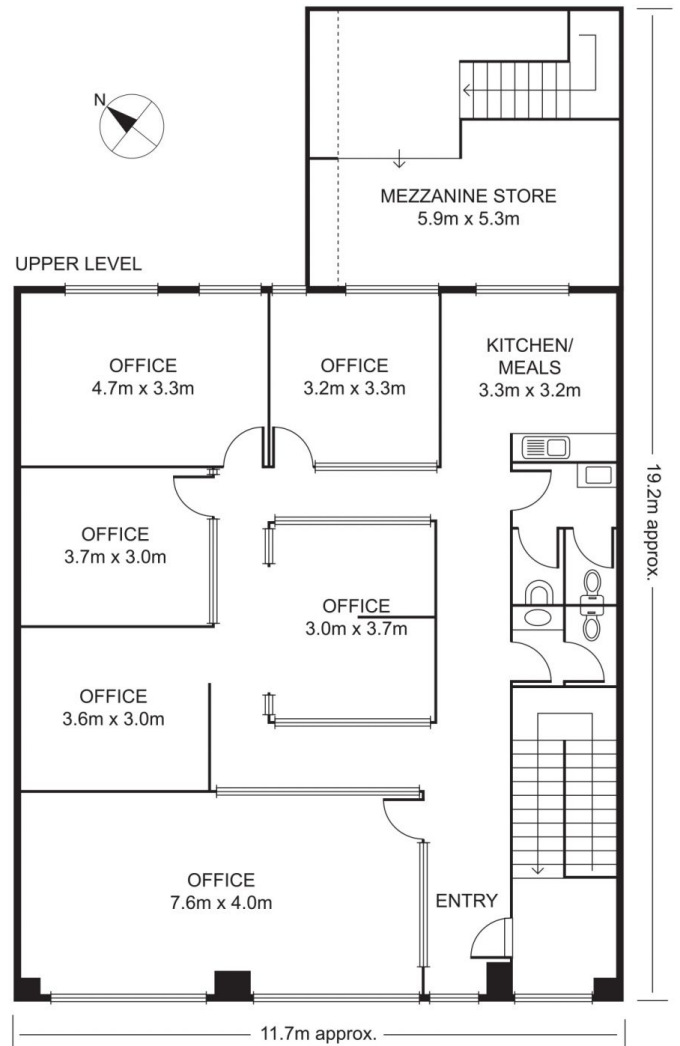
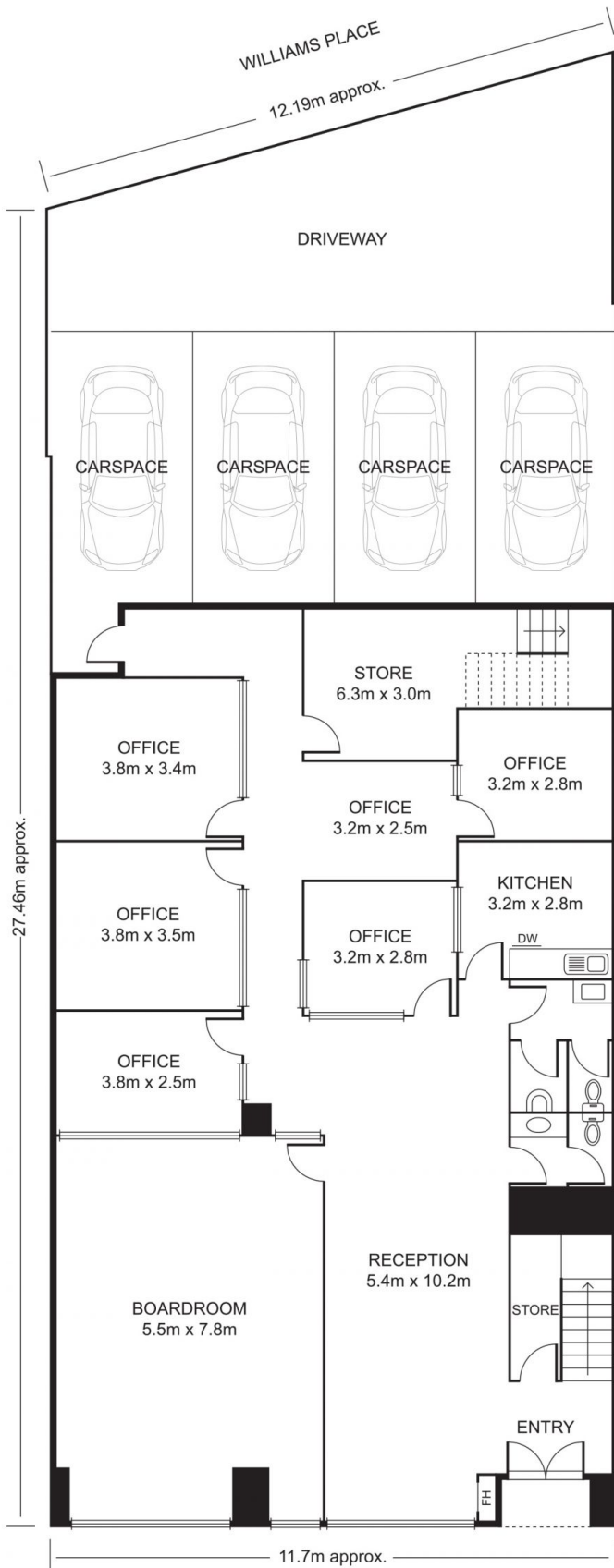
**Land Size** : 338 sqm

**View** : <https://www.rosinsmyth.com.au/6197890>



**Martin Smyth**  
9695 5999

# 147 MONTAGUE STREET, SOUTH MELBOURNE



Disclaimer: Please note plans are indicative only and not drawn to exact scale. All dimensions are approximate. Potential buyers should satisfy themselves of any pertinent matters.