

ROSIN SMYTH



14/70 Gadd Street Northcote VIC

2 2 1

In pristine condition this 3 level Town House is situated 'At the Cotery' located in Melbourne's Northcote, just 6km from the CBD.

Northcote is one of Melbourne's most popular inner city suburbs with its convenient location and community environment.

Set amongst fashion boutiques, cafes, restaurants and bars, there is a definite urban vibe.

Boasting stunning architecture, the property provides well planned layout and delivers a warm earthy palette and timeless design.

Layout comprises of:

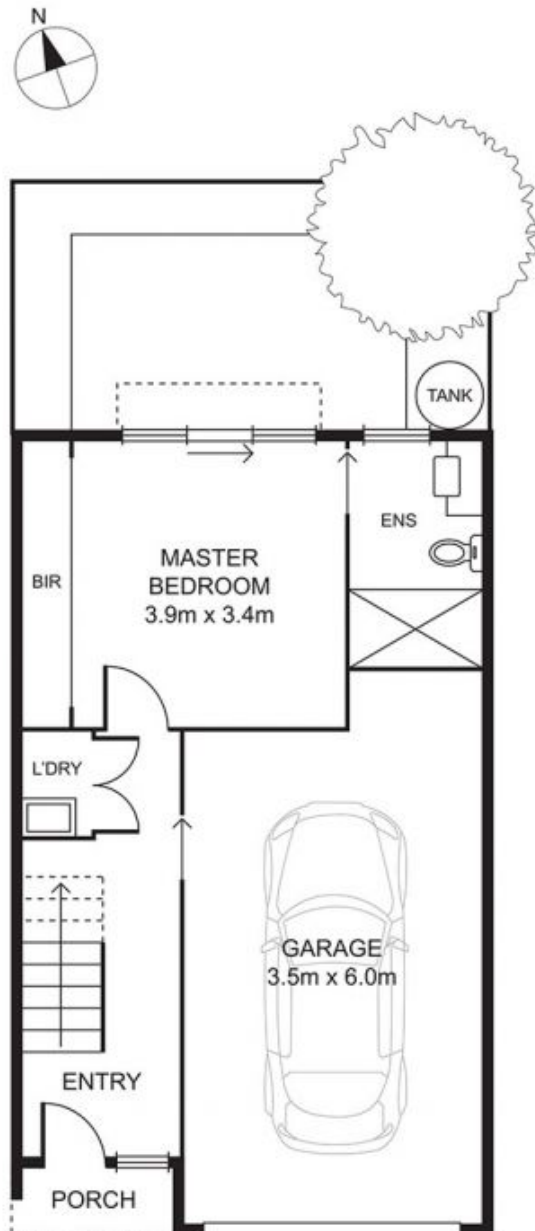
First level: Drive in garage via remote control roller door with direct secure access to main entrance hallway. Built-in European laundry cupboard. Master bedroom features built-in robes, luxury ensuite and opens on to North facing

View : <https://www.rosinsmyth.com.au/6197871>

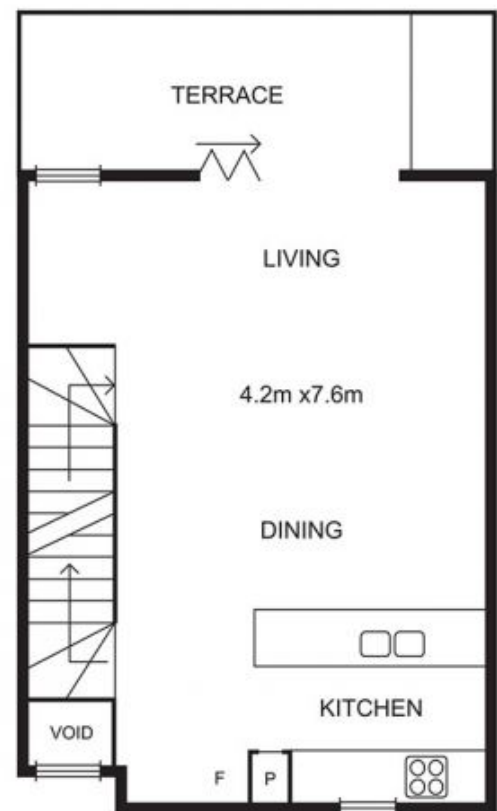


Martin Smyth
9695 5999

14/70 GADD STREET, NORTHCOTE



SECOND FLOOR



FIRST FLOOR