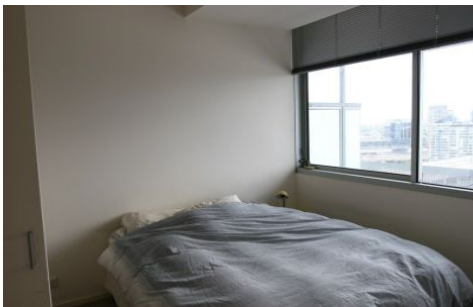


# ROSIN SMYTH



**1904/620 COLLINS Street MELBOURNE VIC**

**2  1  1 **

\*THIS LOCATION BRIDGES THE CBD AND DOCKLANDS.DIRECTLY OPPOSITE THE SOUTHERN CROSS STATION,IN THE HEART OF MELBOURNES ENTERTAINMENT ,RECREATIONAL AND BUSINESS DISTRICT

\*MODERN AND ATTRACTIVE BUILDING WITH STUNNING VIEWS

\*APARTMENT IS SITUATED HIGH ON LEVEL 19 OVERLOOKING SPENCER STREET

\*ARCHITECT LAYOUT COMPRISES 2 BEDROOMS,SPACIOUS BATHROOM WITH BATH AND LAUNDRY,DINING AND LIVING AREAS.LARGE TERRACE/BALCONY

\*CARPARK INCLUDED PLUS LOCK UP STOREROOM

\*CURRENTLY LEASED WITH VACANT POSSESSION AVAILABLE

**Building Size** : 71 sqm

**View** : <https://www.rosinsmyth.com.au/6197852>



**Martin Smyth**  
**9695 5999**