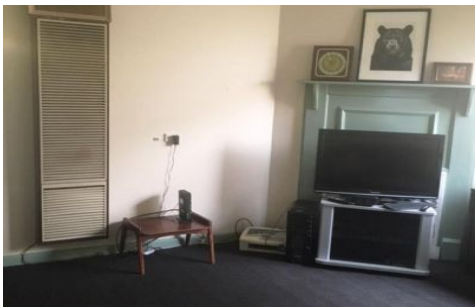


ROSIN SMYTH



96 Williamstown Road KINGSVILLE VIC

3  **1** 

This three bedroom double fronted weatherboard home is offering a great lifestyle. Located in a prime location only 15 minutes from the city and close to all amenities.

View : <https://www.rosinsmyth.com.au/6197843>

This property comprises:

- Three good sized bedrooms, one with BIR
 - Spacious kitchen/meal area
 - Separate Lounge
 - Large backyard for entertaining
 - Close to public transport, shops and schools
- \$400 P/W AVAILABLE NOW**