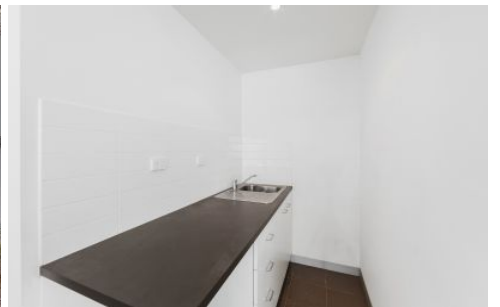


ROSIN SMYTH



77 Stubbs Street Kensington VIC

Situated in the heart of Kensington, this magnificent corner office / showroom offers a versatile space with excellent exposure!

Key Property Features;

- Open plan design
- Floor-to-ceiling glass facade
- Two carparks
- Includes central bathroom with shower, galley-style kitchen and split system AC
- Build Area: 85 m2 *

Situated in a strategic locale, this property is within mere moments to Kensington Village, and both Kensington and Macaulay Train Stations. Additionally, enjoy excellent access to City Link, the Airport, Docklands, and Melbourne CBD.

Price : Contact Agent
Building Size : 85 sqm
View : <https://www.rosinsmyth.com.au/6197711>



Martin Smyth
9695 5999