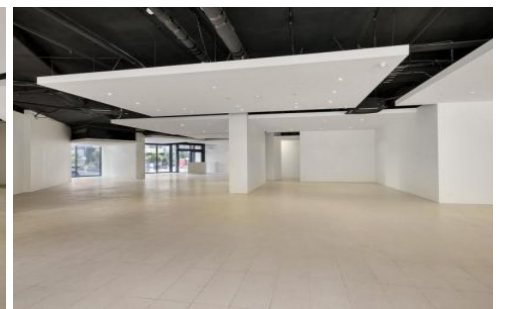
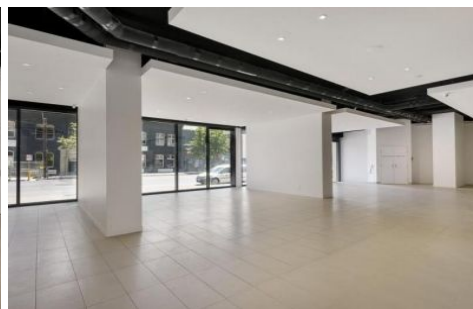
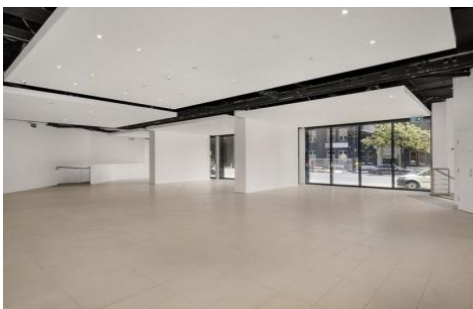


# ROSIN SMYTH



## 269-283 City Road Southbank VIC

First Class Retail/Showroom Space with Two Street Frontages and Entries.

Positioned beneath Salvos Bank Apartment development in the heart of Southbank and adjacent to Woolworths brand new Metro Facility, this prime retail/showroom space will impress.

- 405 sqm floor area (approx)
- Suit Hospitality, retail, Lifestyle (S.T.C.A)
- Floor to ceiling glass
- Disabled Access
- Loading Dock
- 2 Street Frontages
- Secure Car Parking available

**Type** : Retail  
**Building Size** : 405 sqm  
**View** : <https://www.rosinsmyth.com.au/6197705>



**Martin Smyth**  
9695 5999

[For full version visit the website](https://www.rosinsmyth.com.au)

<https://www.rosinsmyth.com.au>