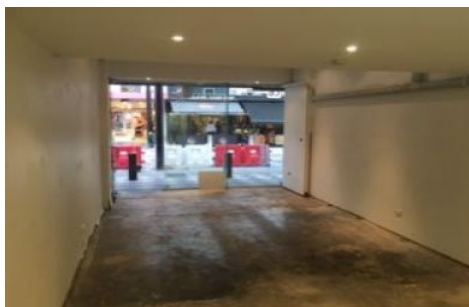
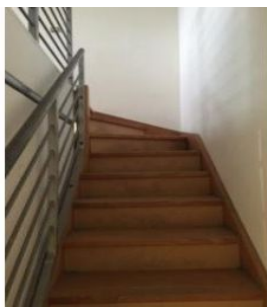


# ROSIN SMYTH



**100 ACLAND Street ST KILDA VIC**

- \*AREA 44 M2 APPROX
- \*CONCRETE FLOOR
- \*MEZZANINE LEVEL WITH WC
- \*PUBLIC CARPARK AT REAR

EXCITING OPPORTUNITY

SUIT MANY USES

**Building Size** : 44 sqm

**View** : <https://www.rosinsmyth.com.au/6197701>



**Martin Smyth**  
**9695 5999**