

ROSIN SMYTH



16 & 17/51-55 City Road SOUTHBANK VIC

To be offered by Auction Thursday 23rd July at 2:00pm.

Rare offering of 2 strata commercial office suites leased to the 1 professional and well established Tenant Vincent Chrisp Architects at market rental.

Located at Melbourne's prime southern city fringe directly opposite Southgate Complex, featuring restaurants, shops and the Langham Hotel, Eureka Skydeck, Crown Casino and short walk to Melbourne's CBD, Flinders Street Train Station, St Kilda Road, trams, Arts Precinct, parklands etc etc.

Subject building known as 'City View'.

Unit 16

* Area: 204 m2

* Leased: 5 years

* Options: 2 + 3 years

* Rental: \$54,060 pa nett + Outgoings + GST

Price : \$ 1,350,000
Building Size : 349 sqm
Land Size : 349 sqm
View : <https://www.rosinsmyth.com.au/6197692>

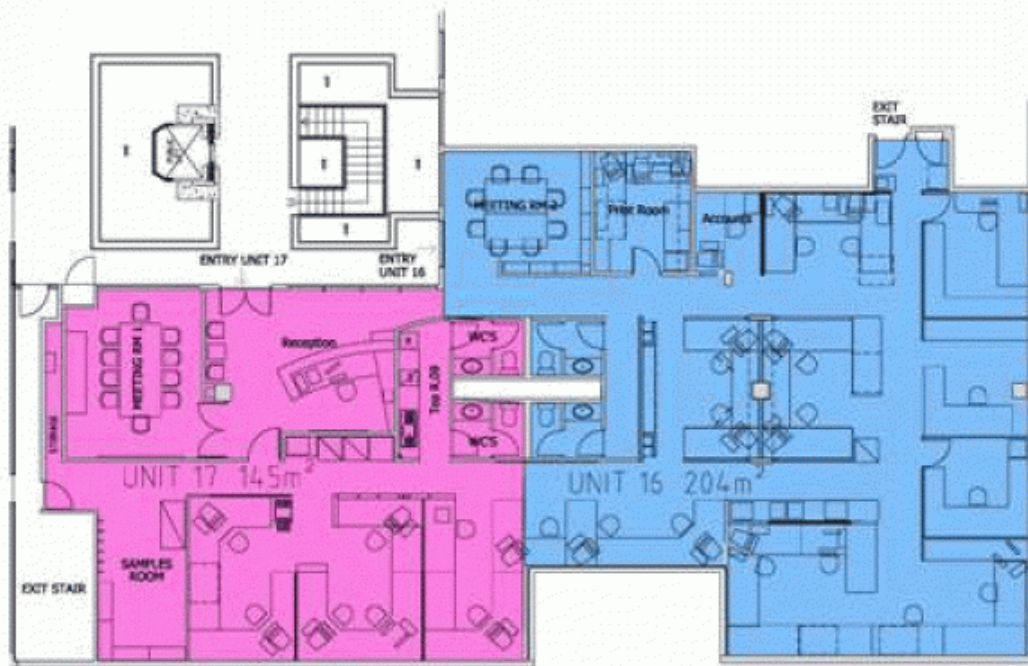


Martin Smyth
9695 5999

NO.	DATE	REVISION

GENERAL NOTES

1. ALL WORK TO BE IN ACCORDANCE WITH THE VCA OFFICE LAYOUT.
2. ALL WORK TO BE IN ACCORDANCE WITH THE VCA OFFICE LAYOUT.
3. ALL WORK TO BE IN ACCORDANCE WITH THE VCA OFFICE LAYOUT.
4. ALL WORK TO BE IN ACCORDANCE WITH THE VCA OFFICE LAYOUT.
5. ALL WORK TO BE IN ACCORDANCE WITH THE VCA OFFICE LAYOUT.
6. ALL WORK TO BE IN ACCORDANCE WITH THE VCA OFFICE LAYOUT.
7. ALL WORK TO BE IN ACCORDANCE WITH THE VCA OFFICE LAYOUT.
8. ALL WORK TO BE IN ACCORDANCE WITH THE VCA OFFICE LAYOUT.
9. ALL WORK TO BE IN ACCORDANCE WITH THE VCA OFFICE LAYOUT.
10. ALL WORK TO BE IN ACCORDANCE WITH THE VCA OFFICE LAYOUT.



NOTES

1. ALL WORK TO BE IN ACCORDANCE WITH THE VCA OFFICE LAYOUT.
2. ALL WORK TO BE IN ACCORDANCE WITH THE VCA OFFICE LAYOUT.
3. ALL WORK TO BE IN ACCORDANCE WITH THE VCA OFFICE LAYOUT.
4. ALL WORK TO BE IN ACCORDANCE WITH THE VCA OFFICE LAYOUT.
5. ALL WORK TO BE IN ACCORDANCE WITH THE VCA OFFICE LAYOUT.
6. ALL WORK TO BE IN ACCORDANCE WITH THE VCA OFFICE LAYOUT.
7. ALL WORK TO BE IN ACCORDANCE WITH THE VCA OFFICE LAYOUT.
8. ALL WORK TO BE IN ACCORDANCE WITH THE VCA OFFICE LAYOUT.
9. ALL WORK TO BE IN ACCORDANCE WITH THE VCA OFFICE LAYOUT.
10. ALL WORK TO BE IN ACCORDANCE WITH THE VCA OFFICE LAYOUT.

VCA OFFICE

MELB OFFICE LAYOUT

51 CITY ROAD
SOUTHBANK

DATE: 01/10/10
DRAWN BY: JLD
CHECKED BY: JLD
PROJECT NO: 101
SHEET NO: 101